

APPROVAL has been given to this Subdivision Plan by Burnie Municipal Council. THE COMMON SEAL of the Warden, Councillors, and Electors of the Municipality of Burnie has been hereunto affixed in the presence of us this 4th day of November 1960 in pursuance of authorisation given at a Meeting of the Council held on the 2nd day of November 1960.

Warden.
Councillor.
Council Clerk.

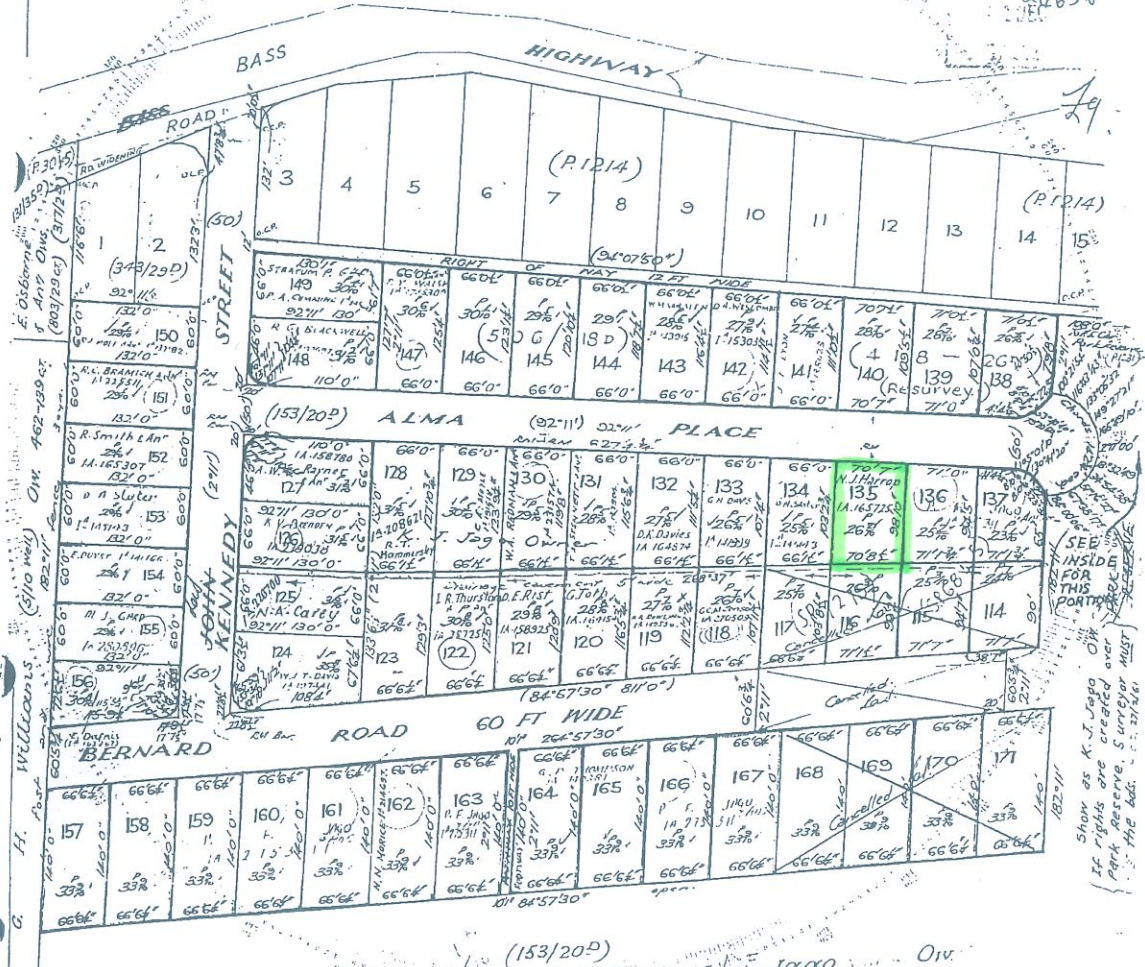
DIAGRAM FROM ACTUAL SURVEY
D 414 SUP 20
REGISTERED NUMBER D54698
COUNTY OF WELLINGTON

No. Of APPLICATION
K. J. Jago 963-14ct. ✓

VICINITY OF EMU BAY
Scale: 100 Feet to an inch

REFERENCE TO CORNERS			
COR.	BEARING	DISTANCE IN LINKS	FROM

THIS SCANNED IMAGE IS A MICROFILM COPY ONLY (ORIGINAL PLAN WAS UNAVAILABLE)



To be filled in by Surveyor.
Date of Instructions
Survey commenced 3/3/53
Survey finished 7/5/53
Error of close 1 in
Plotted by
Examined as to boundaries
Mathematically checked
Entered on Card by
dated this day of May, 1953

I, Lionel Alexander Simpson of Devonport Registered Surveyor, of Tasmania, do hereby certify that this plan has been made from surveys executed by me or under my own personal supervision, inspection, and field check, and that both plan and survey are correct, and have been made in accordance with the Land Surveyors' By-Law No. 2, dated 3rd July, 1946.

L. A. Simpson
Authorised Surveyor.